

ONE GOAL, ONE DREAM - MISSION SELECTION 2024

PREMIUM BUNDLE PDF COURSE 2024

Highlighting Segments

- Beginners Bundle Quiz Course
- Topic-Wise Bundle Course
- Exam-Wise Bundle PDF Course
- Section-Wise Bundle PDF Course
- Memory Based Questions Bundle Course
- Prelims Scoring Part Bundle Course
- Mains Booster Bundle Course
- Critical Reasoning Bundle Course
- Mains Two Mark Questions Bundle Course
- Daily Editorial Based English Questions PDF
- Special Quants Arithmetic Bundle Course
- Special DI & Caselet Bundle Course
- Special Puzzles & Seating Bundle Course
- 101 Version 2.0 New Pattern Puzzles & DI Questions
- Current Affairs Bundle PDF Course
- Static Banking & Static GK Bundle Course
- Computer Awareness Bundle Course

***Special Offer For PRIME Users**

One Time Offer Ends Soon - Hurry!!!

GRAB IT NOW

[Click Here For Bundle PDF Course](#)

[Click Here to Subscribe Our Yearly Mock Test Package](#)

Parallel Row Seating Arrangement for Bank Exam – Question Bank Set 1 (Eng)

Directions (1-5): Study the following information carefully and answer the below questions.

Twelve persons are sitting in two parallel rows and facing each other. In row 1, O, P, Q, R, S and T are sitting and facing the south and in row 2, A, B, C, D, E and F are sitting and facing the north.

P faces the person who sits third to the left of B. Two persons sit between B and A. Q faces the person who sits two places away from A. Two persons sit between Q and the person who faces C. T sits third to the right of R who doesn't face the immediate neighbours of A. Neither Q nor R faces E. The number of persons who sits to the left of F is one less than the number of persons who sit to the right of O. S face the person who sits to the left of D.

1) Who among the following one is sitting third to the right of the person who faces D?

- A. The person who faces B
- B. The person who faces C
- C. The person who faces A
- D. The person who faces E
- E. None of these

2) Which of the following statement is/are false with respect to row 1?

- I. Two persons sit between T and the person who faces D
- II. A faces the person who sits third to the left of O
- III. E sits opposite to the person who sits second to the left of S

- A. Both I and II
- B. Only II
- C. Both II and III
- D. All I, II and III
- E. None of these

3) How many persons sit between O and the person who faces A?

- A. None
- B. One
- C. Two
- D. Three
- E. None of these

4) In a certain way, P is related to F and in the same way B is related to T, then E is related to ___?

- A. S
- B. Q
- C. O
- D. either a or b
- E. either a or c

5) Four of the following five are alike in a certain way and hence form the group. Which is the one that does not belong to the group?

- A. C
- B. R
- C. S
- D. O
- E. D

Parallel Row Seating Arrangement for Bank Exam – Question Bank Set 1 (Eng)

Directions (6-10): Study the following information carefully and answer the below questions

Twelve persons are sitting in the two parallel rows and facing each other. In Row-1 persons viz. H, I, J, K, L, and M are facing the south. In Row-2 persons viz. U, V, W, X, Y, and Z are facing the north. All the information is not necessarily in the same order.

U sits second to the left of Z who sits opposite to M. M sits second to the right of I. The number of persons sits to the left of U is the same as the number of persons sits to the right of X. L sits second to the left of H who does not sit end of the row. W sits opposite to neither H nor I. Y sits second to the right of W. J sits immediate right of K who does not sit opposite to W.

6) Who among the following pairs sit opposite to each other?

- I. JW
- II. LX
- III. IZ
- IV. HU
- A. Only II and IV
- B. Only I and II
- C. Only III and IV
- D. Only I and III
- E. All are true

7) Four of the five among the following are similar in such a way to form a group, who among the following one doesn't belong to the group?

- A. JH
- B. MI
- C. ZV
- D. WY
- E. UX

8) Who among the following person sits second to the right of the one who sits opposite to Y?

- A. The one who sits opposite to W
- B. The one who sits immediate right of X
- C. V
- D. The one who sits second to the left of U
- E. Z

9) How many persons sit between K and L?

- A. One
- B. Three
- C. Four
- D. No one
- E. Two

10) Who among the following person sits diagonally opposite to I?

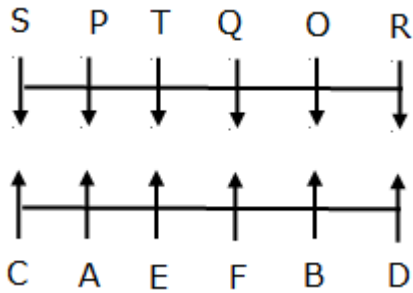
- A. W
- B. U
- C. The one who sits immediate left of Z
- D. The one who sits second to the right of Y
- E. X

Parallel Row Seating Arrangement for Bank Exam – Question Bank Set 1 (Eng)

ANSWER WITH EXPLANATION

Directions (1-5):

- 1) Answer: D
- 2) Answer: B
- 3) Answer: C
- 4) Answer: E
- 5) Answer: D

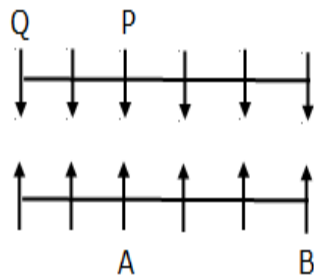
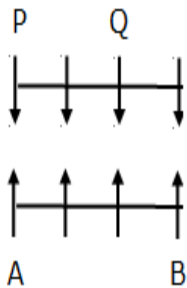


P faces the person who sits third to the left of B.

Two persons sit between B and A. Q faces the person who sits two places away from A.

Case I

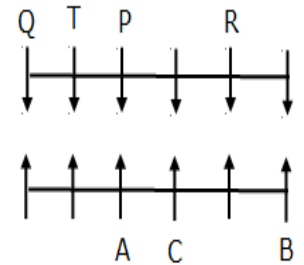
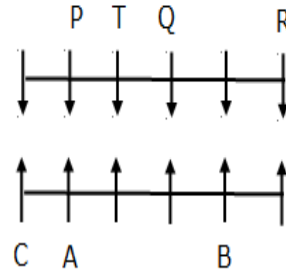
Case II



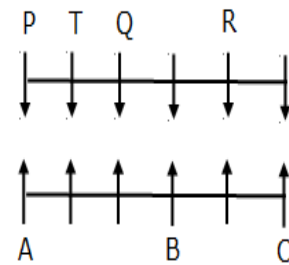
Two persons sit between Q and the person who faces C. T sits third to the right of R who doesn't face the immediate neighbours of A.

Case I

Case II



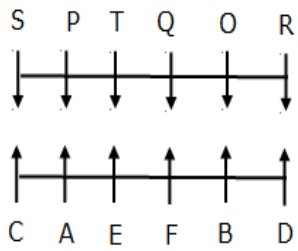
Case Ia



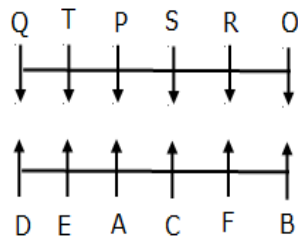
Neither Q nor R faces E. The number of persons who sits to the left of F is one less than the number of persons who sit to the right of O. S face the person who sits to the left of D. case-II and case-Ia is eliminated.

Parallel Row Seating Arrangement for Bank Exam – Question Bank Set 1 (Eng)

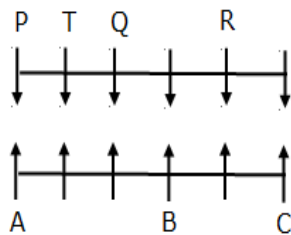
Case I



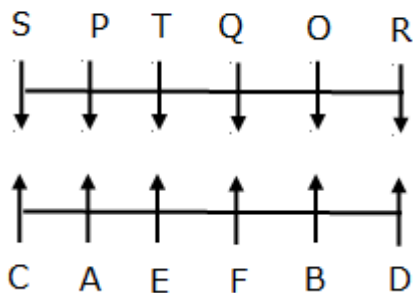
~~Case II~~



~~Case Ia~~



Case I



Directions (6-10):

6) Answer: B

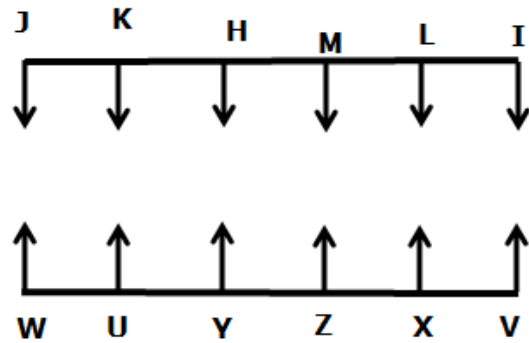
7) Answer: E

8) Answer: A

9) Answer: E

10) Answer: A

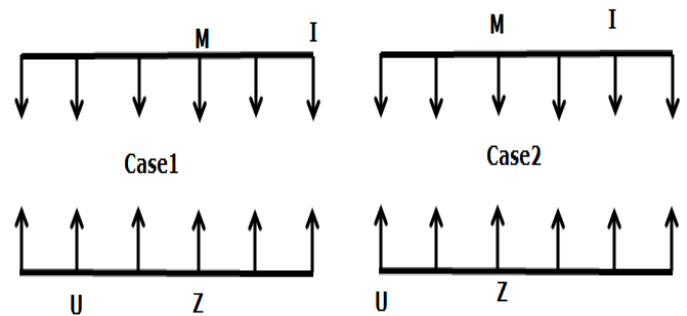
Final Arrangement



We have,

- U sits second to the left of Z who sits opposite to M.
- M sits second to the right of I.

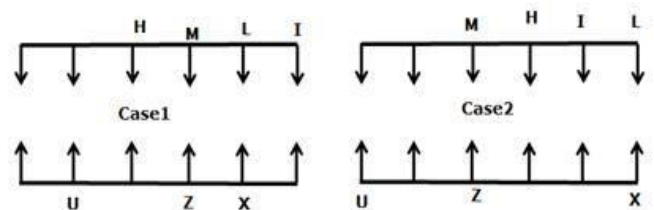
From the above condition, there are two possibilities.



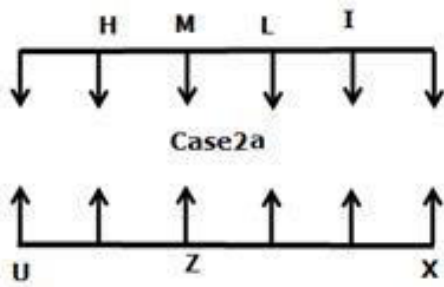
Again we have,

- The number of persons sits to the left of U is the same as the number of persons sits to the right of X.
- L sits second to the left of H who does not sit end of the row.

From the above condition, there are three possibilities.



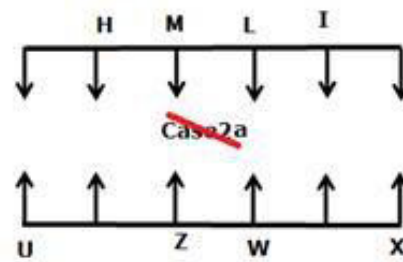
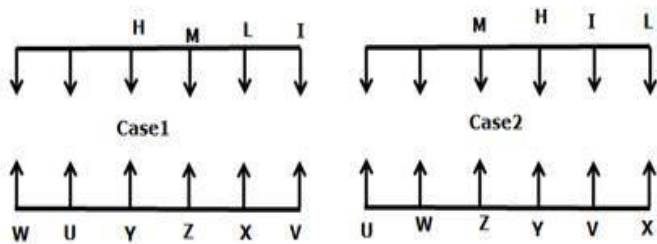
Parallel Row Seating Arrangement for Bank Exam – Question Bank Set 1 (Eng)



Again we have,

- W sits opposite to neither H nor I.
- Y sits second to the right of W.

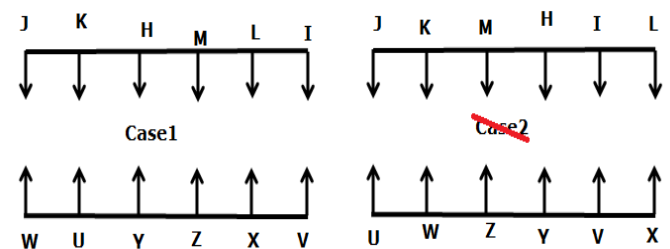
From the above condition, Case 2a gets eliminated.



Again we have,

- J sits immediate right of K who does not sit opposite to W.

From the above condition, Case 2 gets eliminated. Case 1 shows the final arrangement.



[Click Here For Bank Exam Free PDF](#)

[Click Here For Reasoning Free PDF](#)

[Click Here For Quantitative Aptitude Free PDF](#)

[Click Here For English Free PDF](#)